

After years as a hidden gem, Fernie Alpine Resort, nestled in the Rockies, has been discovered by skiers from all over the world.

Season Pass

Getaway
Guide

If there's a more euphoric experience than floating through fresh powder in backcountry B.C., we've yet to find it. **These six destinations beckon**—and yes, hot tubs and mulled wine are included

by Jennifer Van Evra

► Whistler Blackcomb

SURE, IT'S EXPENSIVE, and yes, it can get crowded, but with two superb mountains, 8,100 skiable acres, a mile of vertical, three glaciers, 12 alpine bowls, 200 trails, and 38 lifts, it's no wonder that Whistler Blackcomb is widely considered one of the world's premier ski resorts. It's also, by far, the most urban of B.C.'s ski destinations: no need to sacrifice luxury or modern conveniences here. You might want to book a visit this season, before hundreds of thousands of visitors from around the globe descend on the winter wonderland for the 2010 Olympic Games



WHERE TO STAY

Four Seasons Private Residences

Snow-covered forest and mountains are what you'll see from the terraces of these two-, three-, or four-bedroom private residences, the epitome of luxury at Whistler. Extras include large-screen TVs, deep soaker tubs, separate steam showers, gas fireplaces, and fully wired work areas—although in a place like this, you're going to want to keep your briefcase closed. After a day on the slopes, unwind at the spa, then cook in your own gourmet kitchen or have a chef-prepared meal waiting for you. Doubles from \$3,200. 4591 Blackcomb Way, 604-935-3400. Fourseasons.com

Nita Lake Lodge

It's been open for less than a year, but already this boutique hotel is considered one of the area's finest. Sitting at the edge of Nita Lake, just steps

from the ski hill but well away from the bustle of the village, the lodge offers floor-to-ceiling basalt rock fireplaces, heated stone floors, and oversized bathrooms with rainshower heads and soaker tubs. The Nita Lake Houses, which range in size from 3,100 to 4,500 square feet, include gourmet kitchens, fireplaces, and private hot tubs with mountain views (from \$1,499 a night—four night minimum). Skip the gruelling Sea to Sky Highway trip by car, and hop on the *Whistler Mountaineer*—its final stop is right next door to the lodge. Doubles from \$149. 2131 Lake Placid Rd., 604-966-5700. Nitalakelodge.com

The Mountainside Lodge

This sleepy lodge is a welcome respite from the frenzied action of the village. Recently updated, the contemporary studio and one-bedroom suites include jetted tubs, fireplaces, and large-screen TVs; some come with full kitchens (although with Trat-

toria di Umberto housed in the building, there's no need to eat in). Book early; it's one of the few places you can get all the modern comforts—including a heated outdoor pool and hot tub—without doling out mountains of cash. Doubles from \$259. 4417 Sundial Pl., 604-932-4511. Mountainsidelodge.ca

Condo Rentals

Costs range from \$229 a night for a studio to \$6,000 or more per night for an executive home. The average two-bedroom condo is \$379 a night. Check out Aloha Whistler, VIP Mountain Holidays, or Whistler Dream Accommodations for luxury suites. Less pricey options include Delta Whistler Village Suites and Holiday Inn SunSpree Resort.

WHERE TO EAT

Araxi

Inspired by the European market culture he experienced while working as the top chef at the Canadian Embassy in Rome, executive chef James Walt focuses on regional and seasonal dishes. The ever-shifting menu is weighted toward seafood; the sharable chilled seafood tower—with oysters, prawns, seared red tuna, smoked salmon, and crab—is a house favourite. Looking for a special wine? Chances are you'll find it in Araxi's excellent 12,000-bottle inventory. 4222 Village Square, 604-932-4540. Araxi.com

Bearfoot Bistro

Famed for its 100-mile ways, this bistro turns eating local into an art form. Fraser Valley pheasant breast and yellowfin tuna tataki are favourite dishes, but be sure to try the King crab trio with coconut chili soup, croquette, and coconut pop rocks—it won a gold medal at the 2008 Canadian Culinary Championships. In a celebratory mood? Saber a bottle of champagne tableside. 4121 Village Green, 604-932-3433. Bearfootbistro.com

Elements Urban Tapas Parlour

Sachi Sushi is a great place for Japanese, Pasta Lupino is a favourite for Italian, the Mountain Club Restaurant is a decidedly hip hangout, and 21 Steps has a fantastic attic bar. But locals will tell you that Elements Urban Tapas Parlour is where to find top tapas and martinis, plus decent breakfasts. (The menu boasts six types of eggs Benny and seven egg frittatas.) In the evening, nosh on Pacific smoked salmon, or seared beef with watercress salad. 102b-4359 Main St., 604-932-5569. Elementswhistler.com

On-Hill Options

The Crystal Hut offers fantastic Belgian waffles at 6,000 feet; at 7,500 feet, the Horstman Hut offers the highest-elevation dining experience; and Steeps in the Roundhouse Lodge on Whistler Mountain is famous for its seafood chowder and its mac and cheese.

Après & Nightlife

Garibaldi Lift Company, the Longhorn Saloon and Grill, the Dubh Linn Gate Pub, and Merlin's Bar and Grill are all top après spots. Buffalo Bills

Bar and Grill, Tommy Africa's Nightclub, the Savage Beagle, and Garfinkel's see revellers play late into the night.

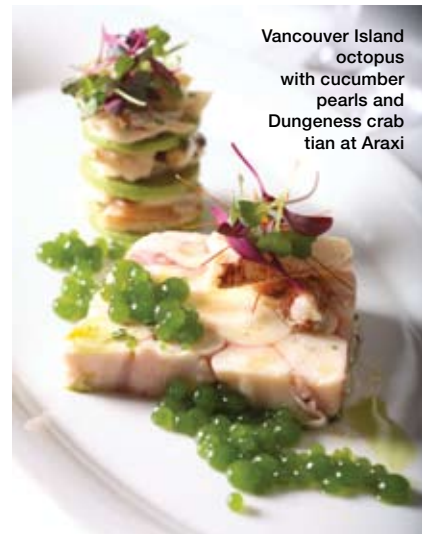
WHAT TO DO

Ride the **Peak 2 Peak Gondola** (opening December 12), an unprecedented feat of engineering that sees tiny cars travelling from Whistler to Blackcomb along 5.5-centimetre-thick cables at a height five times that of the Wall Centre.

Crave high-flying adventure that's a little closer to the ground? On a **Ziptrek Ecotour**, see nature in fast-forward as you hurtle 200 feet over snow-covered trees and glacial rivers.

Once you're back on terra firma, try out a few cross-country trails at the **Whistler Olympic Park**, where elite athletes will race come 2010; or visit the **Whistler Sliding Centre**, which will host the bobsled, luge, and skeleton events.

Rejuvenate at one of Whistler's many award-winning spas (**Spa at Four Seasons**, **Solarice Wellness Spa**, **VIDA Wellness Spa at the Fairmont Chateau Whistler**) but for a truly exceptional experience, visit **Taman Sari Royal Heritage Spa** (4359 Main St., 604-938-5982. Tamansarispa.com) for a Javanese massage.



Vancouver Island octopus with cucumber pearls and Dungeness crab tian at Araxi

WHERE TO BUY

CONDO

\$884,000

257-4800 SPEARHEAD DR.

You can't get much closer to the hill than this fully furnished two-bedroom, 788-square-foot, ski-in/ski-out condo, located right on Blackcomb Mountain, just under the Solar Coaster. Pluses include a bike and ski locker, an exercise room, a hot tub, and an outdoor pool.



CHALET

\$1,199,000

8236 RAINBOW DR.

You'll have to drive three kilometres to the ski hill from this five-bedroom, three-bath Alpine Meadows chalet, but that's what makes it more affordable. Recently renovated, the home includes a modern kitchen with stainless-steel appliances. It's set on a 10,000-square-foot treed lot.



VIP

\$8,900,000

4868 SUMMIT LANE

Located right on Blackcomb Mountain—you can see it from the Solar Coaster, on your left just before Base II—this meticulous five-bedroom five-bath 4,297-square-foot executive home includes a "gathering floor," as well as four fireplaces and a secluded master suite.



CONTACT Marion Anderson, 604-905-6364 direct or 604-938-3885 cell; marion@myspp.com



HILL
STATS

Travel Time from Vancouver 2 hours by car **Annual Snowfall** 1,022 cm (33.5 feet) **Average Winter Temperature** -8 degrees Celsius in the alpine, -5 degrees Celsius in the village **Vertical Rise** 1,609 metres (5,280 feet) **Top Elevation** 2,284 metres (7,494 feet) **Bottom Elevation** 675 metres (2,214 feet) **Day Skiing** 8:30 a.m. to 3 p.m. **Night Skiing Blackcomb:** Thursday to Saturday, 5 to 9 p.m. **Lifts 38 Runs 200 Whistler:** 20% beginner, 55% intermediate, 25% advanced; **Blackcomb:** 15% beginner, 55% intermediate, 30% advanced **Longest Run Whistler:** Burnt Stew, 11 kilometres (7 miles); **Blackcomb:** Green Road, 11 kilometres (7 miles) **Steepest Run Whistler:** the Coloir, average grade 43%; **Blackcomb:** Big Bang, average grade 43% **Other Features** 6 terrain parks, 1 Super Pipe

Leanna Rathkelly, courtesy Tourism Whistler

Top left: Courtesy of Araxi; Top right: Big White Ski Resort, BC, Canada / Big White Ski Resort Ltd.

Quick Guide

► Big White

Carnival nights, ice skating, and snow tubing at the Mega Snow Coaster make Big White B.C.'s most family-friendly resort. Heaps of champagne powder and the most runs outside Whistler—without the Whistler crowds or prices—give it cred with the pros



WHERE TO STAY

White Crystal Inn

Roll out of bed and onto the lift from this inn located right beside Lara's Gondola and the Bullet Express Chair. Decorated with cedar and slate, the 52-room ski-in/ski-out spot offers spacious rooms with galley kitchens, heated floors and gas fireplaces. Doubles from \$132. 888-676-9977.

WHERE TO EAT

Snowshoe Sam's

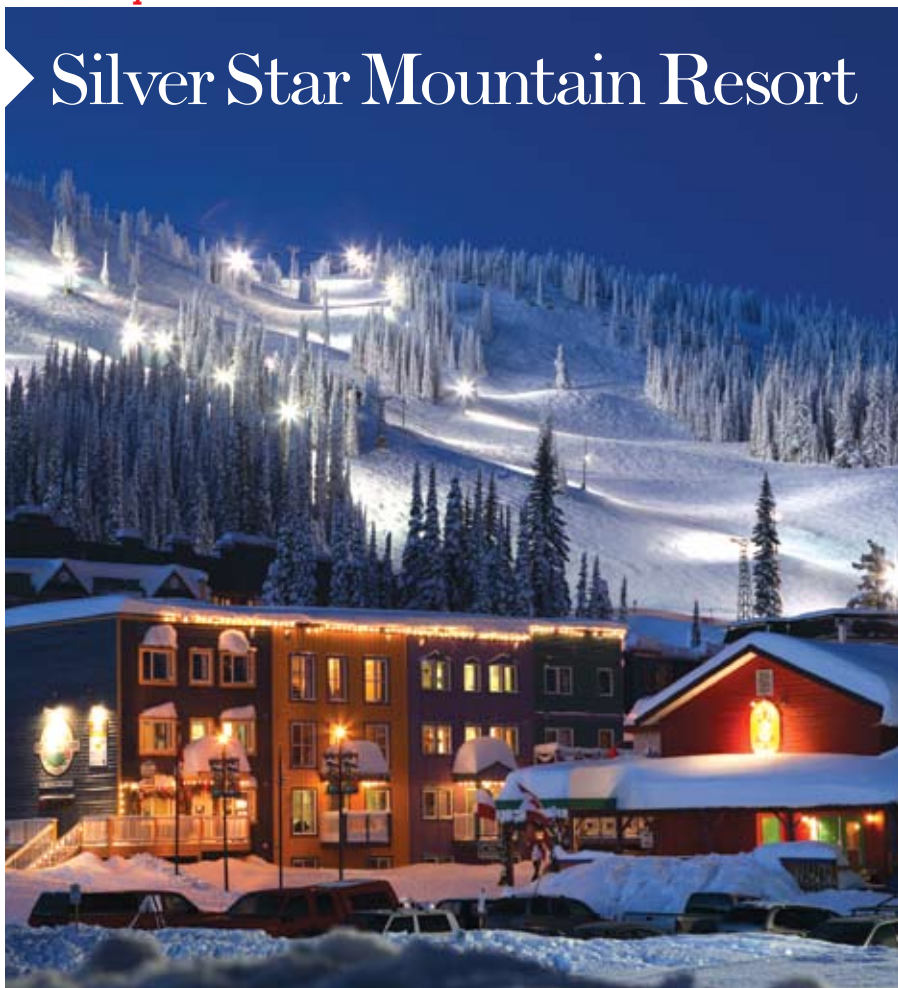
Rated "#1 Skibar" by *Ski Canada* magazine, this Big White hot spot started out as a restaurant and hot tub emporium, where you could have dinner and drinks, then—ick—rent hot tubs by the half-hour. The tubs are long gone, but what remains is a lively eatery that serves back country-sized portions of prime rib, chicken cordon bleu, pastas, and more. Try the legendary "Gun Barrel Coffee," which involves Grand Marnier-infused coffee and a double-barrelled shotgun. 250-765-5959.

WHAT TO DO

Dogsledding

For \$175, pack any number of people—up to 300 pounds—onto a dogsled and roam through the beautiful backwoods. Or strap on a pair of skates and enjoy an evening of ice skating on Big White's two outdoor ponds—the highest rinks in Canada—before warming up with free hot chocolate around a rinkside fire. 250-491-6111.

Complete guide to Big White at Vanmag.com



Silver Star Mountain Resort

SILVER STAR CERTAINLY isn't the largest resort in the province, and it's not the place to go to party, but what it lacks in size and nightlife it makes up for in small-town charm. The attempt to make it look like an old mining town gives the village a strange movie-set feel, but with long groomed runs on one side of the mountain, more advanced terrain on the other, a stunning network of cross-country trails, and so much powder that they never need to make snow, Silver Star offers plenty of variety on the slopes. And, led by 30-year veteran Norm Kreutz—widely considered one of the best instructors in Canada—the mountain's Snowsport School is a fantastic place to learn how to ski like the pros

WHERE TO STAY

Snowbird Lodge Inn

With the ski hill on one side and Bugaboo's and the Silver Grill (see Where to Eat) on the other, you won't find a more central location than this inn, the most upscale in town. The large units come with granite countertops, stainless-steel appliances, stone fireplaces, and hot tubs on every deck. The

inn also offers a small fitness room, as well as a 24-seat theatre where two family movies are screened every night. 250-558-6083. [Snowbirdlodge.ca](#)

Silver Star Club Resort

This large resort comprises three buildings. The ski-in/ski-out Chilcoot Lodge and Conference Centre offers tasteful one- and two-bedroom suites with fireplaces, as well as two rooftop hot tubs. Located

right on the main drag, the recently renovated Vance Creek Lodge is also ski-in/ski-out, and in addition to condo-style suites with all the trimmings, it's steps away from all of the restaurants and shops. Newest of the three is the ski-in/ski-out Silver Creek Lodge, which come with large rooms and gas fireplaces for those snowy winter evenings, as well as heated indoor ski lockers, two rooftop hot tubs, and an all-new exercise room. Starting at \$129 a night. 250-549-5191. [Silverstarclubresort.com](#)

Lord Aberdeen Hotel

Located in the heart of the village, this friendly ski-in/ski-out hotel offers clean and comfy one- and two-bedroom apartments for skiers and boarders who don't need chocolates on their pillows. All of the suites are nonsmoking and come with full kitchens, cable TV, a bathroom, and a hide-a-bed in the living room. Some are pet-friendly. And, with a full grocery store and specialty liquor outlet on the ground floor, you'll never have to go far to pick up a few staples. A tip: The hotel has been undergoing room-by-room renovations, so be sure to ask for a newer one. (Another spot that's easier on the wallet? The Pinnacles Suite Hotel.) Starting at \$189 a night. 250-542-1992. [Lordaberdeen.com](#)

Condo Rentals

From \$119 a night for a studio (some come with lift tickets), things top out at \$1,200 for a three bedroom and den penthouse at the Snowbird Lodge—your best bet for luxury accommodation. Find good value at Creekside Condos, Silver Star Club Resort, and Lord Aberdeen Hotel.

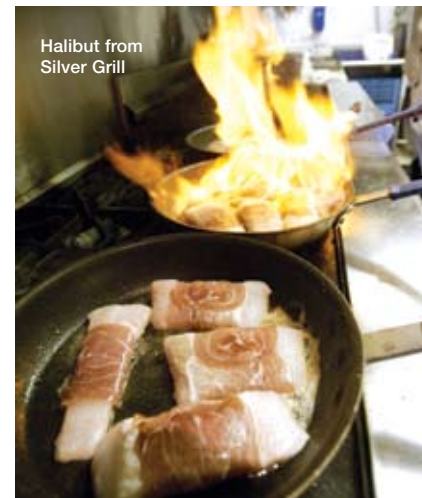
WHERE TO EAT

Silver Grill Steak and Chop House

Chef Martin Stacey worked at the upscale Langara Island Lodge in the Queen Charlottes before landing at this cozy Silver Star spot, the poshest room on the hill. Dijon-herb-crusted rack of lamb, pan-roasted Wentzel duck breast with espresso-anise rub, and the grilled Pacific salmon filet with tomato-leek jam and basil-oil drizzle are just a few of the restaurant's colourful entrées—but AAA steak, including a 16-ounce Mountain Man cut bone-in rib eye (\$48), is what keeps locals coming back. Leave a little room for dessert—Stacey's crème brûlée is heavenly.

Long John's Pub

Surrounded by rusty old mining tools hanging on walls that are made to look like bedrock (there's



Halibut from Silver Grill

that faux-mining theme again), pubgoers can fill up on chili served in bread bowls and Long John's burgers—all in an atmosphere that can border of the rowdy. It's a great place for après and evening bebies, too; it's not uncommon to see revellers leaving at 11 p.m. still snapped into their ski boots. For a more contemporary atmosphere, wander over to the Den and choose from inventive soups and wraps on a chalkboard menu that changes daily.

Bugaboos Bakery Café

Discover this café on day one of your ski vacation and you'll likely be back on day two,

three, four, and five. Dutch natives Frank and Caroline Berkers opened the restaurant almost a decade ago and won instant renown for their house-made soups, sandwiches, pastries, and, most of all, their ecstasy-inducing cinnamon buns, which are made from cinnamon- and sugar-infused croissant dough. They also serve the best espresso in town.

WHAT TO DO

Silver Star is renowned for its alpine skiing and snowboarding, but it's well worth skipping the chairlifts for a day to explore the extensive network of **cross country trails**—all 105 kilometres of them—which are groomed and trackset daily, and offer stunning views of the Monashee mountains as well as Kalamalka and Okanagan lakes.

Strap on a pair of **snowshoes** and take a tour with renowned local naturalist Roseanne Van Ee to learn about the area's flora and fauna. Or take a **sleigh ride** out to the Wild Horseman's Cabin, where you can enjoy hearty foods such as schnitzel and AAA prime rib and warm up around the fire.

For faster-paced action, head into town and catch a **Vernon Vipers hockey game** with the throngs of Australian tourists who love to watch Canada's game played by juniors (even if they have no idea what's going on).

WHERE TO BUY

CONDO	<p>\$429,000 357 MONASHEE RD. You'll get stunning Monashee mountains views from this 973-square-foot ski-in/ski-out two-bedroom at the Grandview. The unit comes with two underground parking spots, an oversized deck, and a ski storage locker with waxing area, as well as a hot tub</p>	
CHALET	<p>\$899,000 515 MONASHEE RD. This custom-built chalet offers a top-notch kitchen, a large master suite, four bedrooms, four bathrooms, a generous media room, and an oversize garage, as well as an energy-efficient hot water heat and air exchange system. Located near the ski hill, it also comes with great views</p>	
VIP	<p>\$1,800,000 501-170 SILVER LODGE LANE Take in panoramic views from the private deck of this 2,270-square-foot ski-in/ski-out penthouse, with its high ceilings and master bedroom with private hot tub deck, as well as two more bedrooms and a media room. Amenities include a gym, a theatre, and a party room with pool table</p>	

Top: Don Weixl, courtesy Tourism British Columbia

CONTACT Don Kassa, Re/Max, 250-549-4161

Quick Guide

Sun Peaks

When Olympic champion Nancy Greene Raine decides to call the mountain home, and the entire Austrian ski team trains there for the 2010 Games, you know it has a thing or two to offer. As with many of the Interior ski resorts, Sun Peaks—is known for its crisp dry powder and weeklong stretches of sunshine



Delta Sun Peaks

WHERE TO STAY

Delta Sun Peaks

This ski-in/ski-out hotel is the only four-diamond ski resort in the interior. Book the fourth-floor mountain suite and you'll get a 1,150-square-foot one-bedroom with high ceilings, a private balcony, and a stunning vista. Or try the new Delta Residences, which come with fully stocked gourmet kitchens and fireplaces. Either way, you'll have access to the health club, several hot tubs, and the heated outdoor pool. From \$199/night. 3240 Village Way, 250-578-6000. [Deltahotels.com](#)

WHERE TO EAT

Mantles

This spot, located in the lobby of the Delta, has close ties to local ranches and organic farms; the menus and wine lists highlight B.C. flavours, including house-smoked salmon and locally raised lamb. Call 48 hours in advance and book Table 51—order whatever you want, prepared however you like it. [Delta Sun Peaks Resort, 250-578-6060.](#)

WHAT TO DO

International Fondue and Torchlight Descent

On Thursday nights, ride to the top of the mountain and feast on fondue in the Sunburst Mid-Mountain Restaurant. Five Mile—the mountain's longest run—is groomed while you nosh, then you ski or snowboard back down under the stars.

Complete guide to Sun Peaks at [Vanmag.com](#)



HILL STATS

Travel Time from Vancouver 5 hours by car, or fly to Kelowna then drive 1 hour **Annual Snowfall** 700 centimetres (23 feet) **Average Winter Temperature** -5 degrees Celsius **Vertical Rise** 760 metres (2,500 feet) **Top Elevation** Top 1,915 metres (6,280 feet) **Bottom Elevation** 1,155 metres (3,780 feet) **Day Skiing** 8:30 a.m. to 3:30 p.m. **Night Skiing** Thursday to Saturday, 3:30 to 8 p.m. **Lifts** 1 Six Pack Express, 2 detachable quads, 2 fixed grip quads, 1 double chair, 4 surface lifts **Runs** 115 **Terrain Type** 20% beginner, 50% intermediate, 30% advanced **Longest Run** Eldorado, 8 kilometres (5 miles) **Steepest Run** Free Fall, average slope 42% **Other Features** 60 kilometres of groomed trackset cross country trails



► Fernie Alpine Resort

FERNIE HAS A COLOURFUL history—including a Native curse, which is said to have brought fire, floods, and famine to the area before the hex was lifted in 1964—and is a welcome antidote to the more contrived, faux-chalet ski towns. Just shy of the Alberta border, it's not the easiest place to get to from Vancouver; but, with 30 feet of feathery powder falling over 2,500 skiable acres every year, and staggering views of the Rockies, it's easy to see why it has become a favourite getaway for Calgarians and Vancouverites alike. It's getting a lot of international attention, too: *Outside*, *Condé Nast Traveler*, and *National Geographic Adventure* have all sung its praises, and *Rolling Stone* even dubbed it “the Coolest Town in North America”

WHERE TO STAY

Lizard Creek Lodge

Boasting a 4.5-star rating, this gorgeous mountain-side lodge offers all the comforts of a luxury hotel without a hint of pretense. The large condo-style rooms come with full bedrooms, kitchens, dining rooms, and fireplaces. Some face the hill; others look out toward the rugged peaks of Mount Fernie, Mount Hosmer, and Castle Mountain. There's also an outdoor pool with a heated deck, a top-notch workout facility, and a spa where the massage

therapists will cure all that ails you. Sink into a leather couch beside the lounge's four-sided stone fireplace and enjoy a single malt, or head for the lodge's restaurant for the finest food in town. From \$260 a night. 250-423-2057. [Lizardcreek.com](#)

Snow Creek Lodge and Cabins

This hillside lodge has an outdoor heated swimming pool, two outdoor hot tubs, ski lockers, and a boutique that sells private-label ski clothing. For more of a backwoods-mountain feel, try Snow Creek Cabin, which sleeps six to eight people and comes

with a full kitchen, a gas fireplace, log furnishings, a gas grill on the deck, and a Victoria clawfoot tub for those long après-ski soaks—as well as access to all of the main lodge's amenities. From \$259 a night. 250-423-7669. [Fernielodgingco.com](#)

Wolf's Den Lodge

Ski-in/ski-out convenience without the steep prices: the Wolf's Den Lodge is the best value on the mountain. (Last year saw a \$69 one-night's-stay-plus-lift-ticket package—a lift ticket alone costs \$75.) A double-occupancy room features two beds, a coffee maker, and a fridge, as well as access to hot tubs and BBQs. Fair warning: one floor is both smoking- and pet-friendly. In the charming town of Fernie, just five kilometres from the hill, the Park Place Lodge is a lovely alternative to the chain motels along the highway. From \$90 a night. 250-423-4655

Condo rentals

\$89 a night for a studio up to \$1,800 for a six-bedroom chalet with hot tub; average two-bedroom is \$300 a night. Affordable options include the Timberline and the Griz Inn. On the highway, the Stanford Inn provides inexpensive rooms and suites.



HILL STATS

Travel Time From Vancouver 11 hours by car; or fly to Calgary then drive 3 hours 45 minutes; or fly to Cranbrook then drive 1 hour **Annual Snowfall** 875 centimetres (29 feet) **Average Winter Temperature** -5 degrees Celsius **Vertical Rise** 857 metres (2,816 feet) **Top Elevation** 1,925 metres (6,316 feet) **Bottom Elevation** 1,068 metres (3,500 feet) **Day Skiing** 9 a.m. to 4 p.m. **Night Skiing** None **Lifts** 2 high-speed quads chairs, 2 quads, 2 triple chairs, 4 surface lifts **Runs** 113 trails, 5 bowls, and tree skiing **Terrain Type** 30% novice, 40% intermediate, 30% advanced **Longest Run** Falling Star, 5 kilometres **Steepest Run** Corner Pocket **Other Features** Terrain park, 14 kilometres of groomed and trackset cross-country trails

Henry Georgi

WHERE TO EAT

Lizard Creek Lodge

Expertly prepared seafood and steaks are the favourites here. Try the pepper-crusted Alberta beef tenderloin with brandy reduction, and join the locals as they flock to the lodge for all-you-can-eat mussels on Thursday nights. For more casual fare, grab a seat by the fire, watch the night skiers from the Great Room, and order a ground prime rib burger or a Guinness marinated blue cheese steak or Canadian snow crab cakes with sweet chili sauce. On Sundays, the restaurant also serves up a legendary buffet brunch.

The Old Elevator

For a town of its size, Fernie has no shortage of great casual dining options, including the Curry Bowl for curries and Yama Goya for great sushi. The Old Elevator is an award-winning restaurant that's housed in an 1908 grain feed store and features the original elevator and loft. The menu focuses on beef, western game, seafood, and pasta dishes, and its extensive wine list has won *Wine Spectator* awards for five years running. 250-423-7115. [Oldelevator.com](#)

The Blue Toque Diner

A local favourite, this café—located in the town's old train station—is the place for all-day breakfast or lunch after an evening of winter

cheer. Cure what ails you with a little hair of the dog on the diner's sun-soaked patio. Afterward, wander next door to the Arts Station, which displays local artworks and presents live music and theatre. 250-423-4637.

WHAT TO DO

Skiers pay thousands of dollars to make fresh tracks in the backcountry, but for a group rate of \$189, the **First Tracks Program** allows you and your entourage to get first crack at the regular ski hill. While all the other downhillers are sipping lattes, you'll meet a ski or snowboard pro who will guide you for two hours of blissfully serene solo skiing or boarding on untouched corduroy.

The hill also features all of the usual snowy stuff—dogsledding, snowshoe tours, and fantastic cross country ski trails. Head indoors for a swim and a water slide at the **Fernie Aquatic Centre**, or discover the town's varied history and its infamous curse at the museum, or take a self-guided walking tour of the town's historic buildings, some of which are reportedly haunted.

Here, drinking beer is a sport; take a **Fernie Brewing Company tour**, and sample award-winning microbrews, then join the lifties as they cheer from the sidelines at a **Ghostriders hockey game**.

WHERE TO BUY

CONDO

\$490,000

649-4559 TIMBERLINE CRES.

Located right on the ski hill, this new 850-square-foot top floor two-bedroom boasts vaulted ceilings, granite counter-tops, stainless appliances, and a wall of windows looking out at the ski hill. Shared amenities include a fitness centre, ski storage, a hot tub, and an outdoor pool.



CHALET

\$1,200,000

4592 TIMBERLINE CRES.

This large five-bedroom waterfront home—okay, it's a pond, but still—is only steps away from the ski lifts. The private chalet includes five bedrooms and four baths, a stone fireplace, and a large eat-in kitchen and dining room that's perfect for entertaining.



VIP

\$3,200,000

8989 MCGIVERIN RD.

This 5,800-square-foot luxury home features three bedrooms, including a master suite with spa and a two-bedroom guest suite. The one-acre property also includes ponds, waterfalls, a greenhouse, and an outdoor fireplace with a pizza oven.



CONTACT Todd Fyfe, 250-423-8989, todd@fernieralestate.com

Quick Guide

► Revelstoke

Last winter, this tiny mountain town finally opened the first phase of its billion-dollar lift-serviced resort which, in 10 to 15 years, will offer a whopping 21 lifts and 120 runs. Ski aficionados from around the globe are already raving about the area's jaw-dropping terrain, its endless powder, its blissfully long runs, and its moderate temperatures



Great Canadian Snowmobile Tours

WHERE TO STAY

The Hillcrest Hotel

Featuring log beams and stone fireplaces, the Hillcrest is one of the few local hotels that offer full spa services, as well as a gym, a steam room, and sauna, and indoor and outdoor hot tubs. Feeling adventurous? Sign up for a day with Selkirk Tangiers Heliskiing, a renowned guiding company that operates right out of the hotel. From \$117 a night. 2100 Oak Dr., 800-716-6199. [Hillcresthotel.com](#)

WHERE TO EAT

Kawakubo Japanese

Shinji Kawakubo, formerly a sous chef on the original Japanese *Iron Chef*, used to make his famous sushi for friends. Eventually, the locals—and business partners Patrick Roche and Keith Stevenson—convinced him to open a restaurant. After dinner, sing your heart out in the restaurant's karaoke room. 109 E. 1st St., 250-837-2467.

WHAT TO DO

Great Canadian Snowmobile Tours

While Revelstoke is becoming a global magnet for skiers, it's already snowmobile heaven. Great Canadian Snowmobile Tours will take you on tours that range from a two-hour introduction to an evening après-ski ride that includes chocolate fondue in the alpine. 250-837-9594.

Complete guide to Revelstoke at [Vanmag.com](#)